



# Precision Air v6 Inflator

## Instruction Sheet

### Precision Air Inflator Includes:

- |                          |                        |
|--------------------------|------------------------|
| 1 Precision Air Inflator | 2 Latex Outlets        |
| 1 Power Cord             | 2 Extension Tips       |
| 1 Foot Pedal             | 1 Double Bubble Outlet |
| 1 Carrying Case          |                        |

### CHILD WARNING

1. This appliance is not to be used by persons (including children) with reduced physical, sensory or mental capabilities or lack of experience, unless supervised or instructed.
2. To prevent the risk of electrical shock, do not use the Precision Air Inflator outdoors when weather conditions are wet. Never operate unit on a wet floor or work area.
3. Prior to plugging the Precision Air Inflator into an electrical outlet, verify that the electrical rating (listed on the label on the back of the Precision Air Inflator) is suitable for the outlet. The Precision Air is not recommended for use in countries where electrical current is not consistently regulated.

### READ PRIOR TO USE:

1. This appliance is not to be used by persons (including children) with reduced physical, sensory or mental capabilities or lack of experience, unless supervised or instructed.
2. The Precision Air is a delicate electrical instrument and may malfunction or be damaged if connected to an outlet with other devices. Always use a surge suppressor outlet and a dedicated electrical outlet at all times to avoid potential issues. Do not use the Precision Air with an outlet that is being used by multiple electrical appliances or the unit may reset or shut down completely.
3. To prevent the risk of electrical shock, do not use the Precision Air Inflator outdoors when weather conditions are wet. Never operate unit on a wet floor or work area.
4. Prior to plugging the Precision Air Inflator into an electrical outlet, verify that the electrical rating (listed on the label on the back of the Precision Air Inflator) is suitable for the outlet. The Precision Air is not recommended for use in countries where electrical current is not consistently regulated.
5. Allow the unit to fully exhaust the air through the vent located on the bottom of the Precision Air before tapping the foot pedal to begin the next cycle.
6. Operate the Precision Air in a temperature controlled environment. When working outdoors, keep the unit out of direct sunlight. Avoid operating unit outdoors in extremely hot weather. If the unit reaches temperatures that exceed normal working conditions, the thermal shut-off control will automatically shut the system down.
7. If the Precision Air Inflator malfunctions or is damaged in any way discontinue use and unplug unit from electrical outlet. Contact an authorized Conwin Service Center for details on how to receive service.

Never attempt to repair the Precision Air Inflator yourself. Opening the Precision Air Inflator case will automatically void manufacturer warranty. Contact an authorized Conwin Service Center for all repairs.



### Setting the Precision Air Inflator



To attach the outlets, firmly press on to each filling port.



Plug the power cord into the side of the unit and into an electrical outlet. (A power strip with a surge protector is recommended.) The digital display will appear when unit has power.



Plug the foot pedal into the side of the unit.



Reference the Size Setting Chart (Fig 1.0) to set the Precision Air for the proper balloon size. Set the appropriate number of Seconds by pressing the arrow buttons on the left side of the control panel digital display window.



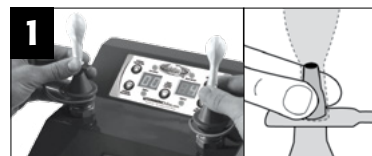
Set the appropriate number of Tenth of a Second by pressing the arrow buttons on the right side of the control panel digital display window.

### Size Setting Chart

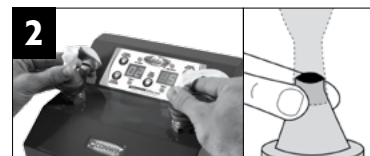
The following settings should be used as guidelines for the Precision Air. Please note that size settings will vary based on user preference, balloon color, manufacturer and from unit to unit. To adjust the size of balloon to your individual preference it is necessary to inflate test balloons.

BALLOON SIZE	APPROX. TIME SETTING
5" BALLOON	0.8 SECONDS
9" BALLOON	1.5 SECONDS
11" BALLOON	2.5 SECONDS
16" BALLOON	8 SECONDS

### Inflating Balloons with the Precision Air Inflator



Place the Extension Tip over the Latex Outlet when inflating 5" balloons. Slide the neck of the balloon all the way down on the Extension Tip until the neck is touching the base. **To achieve consistent results, do not cover the opening of the Extension Tips with your fingers.**



For 9" balloons and larger, remove the Extension Tip and roll the neck of the balloon over the Latex Outlet. **To achieve consistent results, do not cover the opening of the outlet with your fingers.**



Tap the foot pedal to begin the inflation cycle. When the system automatically shuts-off, remove the balloons from the outlets without allowing any of the air to escape, and tie. Wait 3 seconds for the auto exhaust vent to shut off before the next cycle. For continuous run cycle tap foot pedal 3 times. To deactivate tap foot pedal once.

### Using & Resetting the Counter

- Every time the foot pedal is pressed the cycle count will be displayed on the digital display windows.
- The time setting for the inflation cycle will disappear once the foot pedal has been pressed. To verify or change the time setting for the inflation cycle, press any of the arrow buttons on the control panel once.
- The balloon time setting will be displayed on the digital window. Press the Reset button in the center of the control panel to set the counter back to zero.



## Change Mode

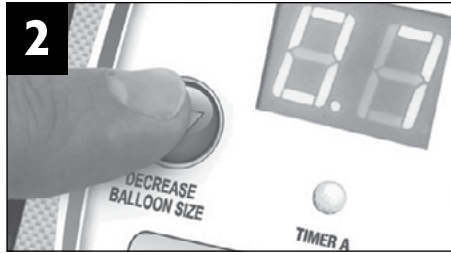
Select the proper mode by pressing the center button. The LED display will indicate the selected mode.

<b>MODE 1</b>	<b>MODE 2</b>	<b>MODE 3</b>
Use Mode 1 to inflate one balloon or when using an accessory outlet.	Use Mode 2 to inflate two balloons to <u>different</u> sizes.	Use Mode 3 to inflate two balloons to the <u>same</u> size.
Timer A ON	Timer A ON	Timer A ON
Timer B OFF	Timer B ON	Timer B OFF
Left Outlet ON	Left Outlet ON	Left Outlet ON
Right Outlet OFF	Right Outlet ON	Right Outlet ON

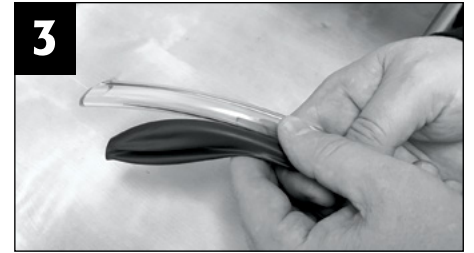
## Double Bubble Inflation Instructions



Remove Friction Fit Outlets from Precision Air. Place the Small Filling Hose on the left outlet and the large filling hose on the right outlet.



Set the Precision Air to MODE 2. Set the left side to 4.8 and the right side to 5.6 (guideline - adjust to your personal preference).



Insert the Small Filling Hose into an 11" balloon. Stretch the 11" balloon taut on the hose.



Insert the 11" balloon into the neck of a 16" balloon. Insert the Large Filling Hose into the neck of the 16" balloon. Hold necks of balloons tightly to prevent air from escaping and tap foot pedal to inflate balloons.



When cycle is complete slide balloons off Filling Hoses and tie the neck of the 11" balloon around the neck of the 16" balloon.

**IMPORTANT: TO AVOID DAMAGE, REMOVE OUTLETS BY PULLING UP ON BLUE BASE OF HOSE ONLY. DO NOT PULL ON HOSE.**

## Tying Double Bubble Balloons



Pull the neck of the inside 11" balloon while pinching the necks of the 2 balloons together.



Stretch the neck of the inside 11" balloon around the neck of the outside 16" balloon.



Tie off the balloon.